

# CUT OUT

CUT HERE

TAPE A QUARTER HERE

TAPE A QUARTER HERE

CUT HERE

Single Page  
Dice Tower  
© 2008 Russel Howell



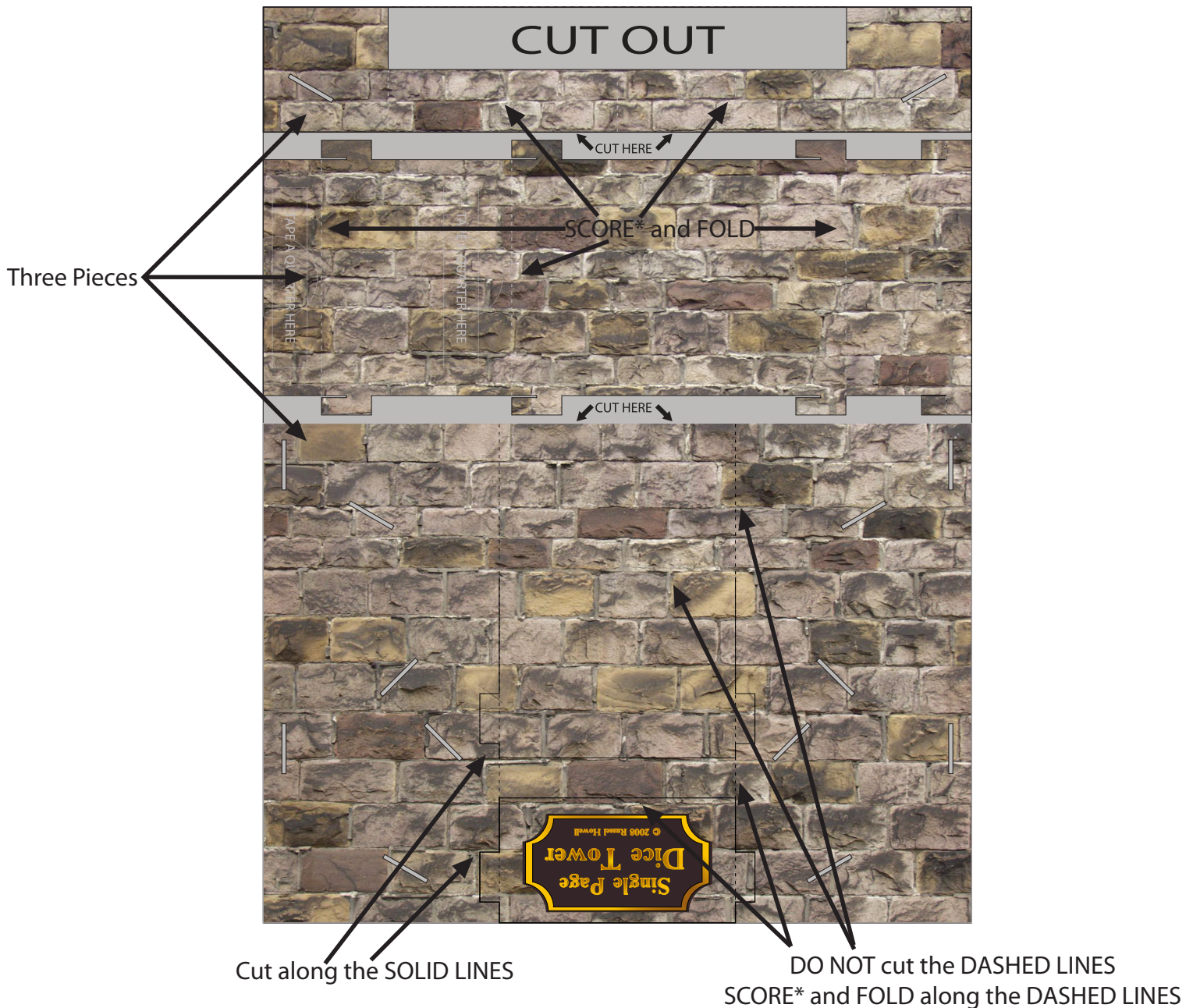
# The Single Page Dice Tower Assembly Instructions

## CUTTING GUIDE

CUT along SOLID lines

SCORE and FOLD on DASHED lines

GREY represents areas to be cut away and discarded.



\*To score is to create a line or depression in the paper that will help the paper fold.  
Lightly run a sharp object along the line. DO NOT CUT THE PAPER IN THE PROCESS.

Designed for 8.5" x 11" paper. Use a piece of at least 65 lb cover (175 g/m<sup>2</sup>) cardstock for best results.

Select borderless printing, on supported printers, for easier cutting.

Tower does not support more than 8 or 9 small or 5 to 6 medium sized dice at a time with the option dice stop.

# The Single Page Dice Tower Assembly Instructions

## FOLDING AND ASSEMBLY

Score\* and FOLD along DASHED lines

